

DEAP

Data Exploration & Analysis Portal

DEAP allows you to explore ABCD/HBCD's data dictionaries using a tree-based ontology browser and a linked interactive table.

Search and filter the data dictionary, explore variable-level metadata and aggregate statistics, and more in DEAP.

Users with a valid data use certification can create, edit, store, share, and download custom datasets that join variables across different tables.



Adolescent Brain Cognitive Development®
Teen Brains. Today's Science. Brighter Future.



HEALTHy Brain and Child Development
Babies • Brains • Bright Futures

Supports ABCD® & HBCD Study data

Create. Curate. Explore. Share.

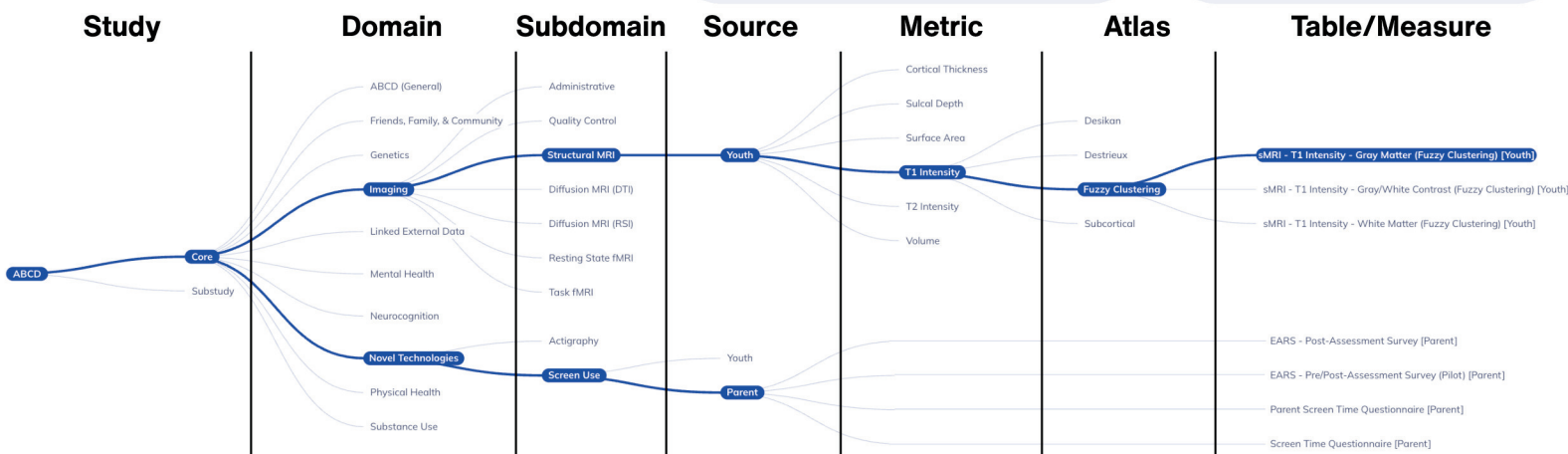
DEAP supports your research's full life cycle. **Query** the data resource with interactive filter and search capabilities. **Customize** the display of the ontology browser and data dictionary table. **Create & download** custom or pre-assembled datasets. **Explore, visualize, & analyze** data. **Organize, store, & share** your assets (datasets, projects, analyses).

Interactive Ontology Tree

Understand the data structure while filtering the variables in the data dictionary.



Share your tree location to help collaborators quickly find variables.



Query the variables' metadata.

Search & filter by metadata elements. Display, hide, move, or sort based on any data dictionary column.

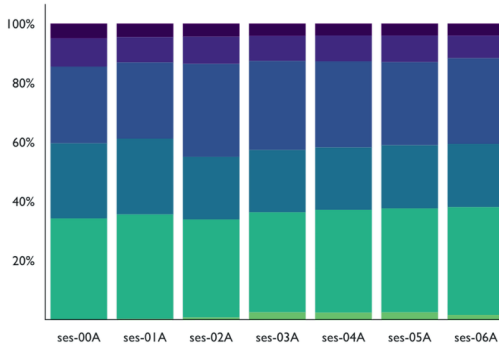
Create a custom dataset by selecting variables, tables, or anything the table is filtered to.

Customizable Data Dictionary Explorer

Variable name	Variable label	Variable type	Data type	Unit ↑	Details
ab_p_demo_child_time_001__01	About how much time per week does the child spend at this other household?	item	integer	hours (h)	🔍
ab_p_demo_child_time_001__01__dk	About how much time per week does the child spend at this other household? [Non-response]	item	character	hours (h)	🔍
ab_p_demo_age	Demographics [Parent]: Youth's age at data collection (note: if table-specific date/time is missing, the age at visit start is used)	administrative	double	years (yr)	🔍
ab_p_demo_country_slf_002	How many years have you lived in the United States?	item	double	years (yr)	🔍
ab_p_demo_country_002	How many years has the child lived in the United States?	item	double	years (yr)	🔍
ab_p_demo_adapt_001	How old was the child at the time of adoption?	item	double	years (yr)	🔍
ab_p_demo_age_slf_001__dk	How old are you? [Non-response]	item	character	years (yr)	🔍

Variable Details

- Variable name & label
- Data type, level of measurement, variable type, and unit
- Ontology (Study, Domain, sub-domain, source, table, etc.)
- Mapping to previous releases
- Administrative information: Order, instructions (Spanish translations), branching, field type, and more
- Hyperlinks to release notes, data warnings, and study documentation



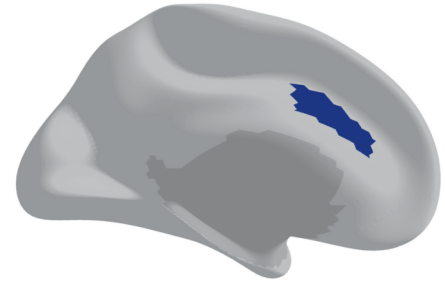
Utilize the **3D brain region explorer** to visualize regions of interest from MRI atlases

Explore aggregate statistics:

- Table with descriptive statistics
- Chart (bar chart or box plot)

Customize the chart:

- Counts/percentages
- Remove missing values



Quick Guide: Custom Datasets

- Navigate to nbdc.deapscience.com
- Use the ontology tree and/or data dictionary explorer to filter variables
- Explore metadata and summary statistics in the variable details view
- Select the variables you want to include in your dataset
- Click 'Add Variables'
- Name your dataset
- Click 'Save Dataset'

Custom datasets are limited to 10,000 variables

My Datasets

Organize your datasets and see key details such as release number, date created, creator, variable count, sharing status, and more.

- ✦ **Label:** Tag datasets for categorization
- 📁 **Projects:** Group datasets
- 👤 **Share:** Collaborate
- ✎ **Edit:** Modify existing datasets
- 🔒 **Lock:** Lock datasets for reproducibility

Additional features:

Duplicate, Archive, and Delete datasets

Download Datasets

Download your dataset in seven file formats. Customize options for categorical coding, missingness, and shadow matrices*. All downloads include the study data dictionary.

*If applicable to a given study and file format

Pre-Assembled Datasets*

A curated set of datasets with different subsets of the data have been created to expedite download & accommodate users who need more than 10,000 variables.

*Pre-assembled datasets vary by study



Available Now



Explore ABCD/HBCD data dictionaries in the ontology tree or table. Create, organize, share, & download datasets.

🔒 Query features are public

🔒 Dataset creation is available with a Data Use Certification

Coming Soon



Generate descriptive statistics and visualizations in the application. Perform inferential statistical analyses securely in the app or in a code-based environment.



Application
nbdc.deapscience.com



Documentation
docs.deapscience.com



DEAP